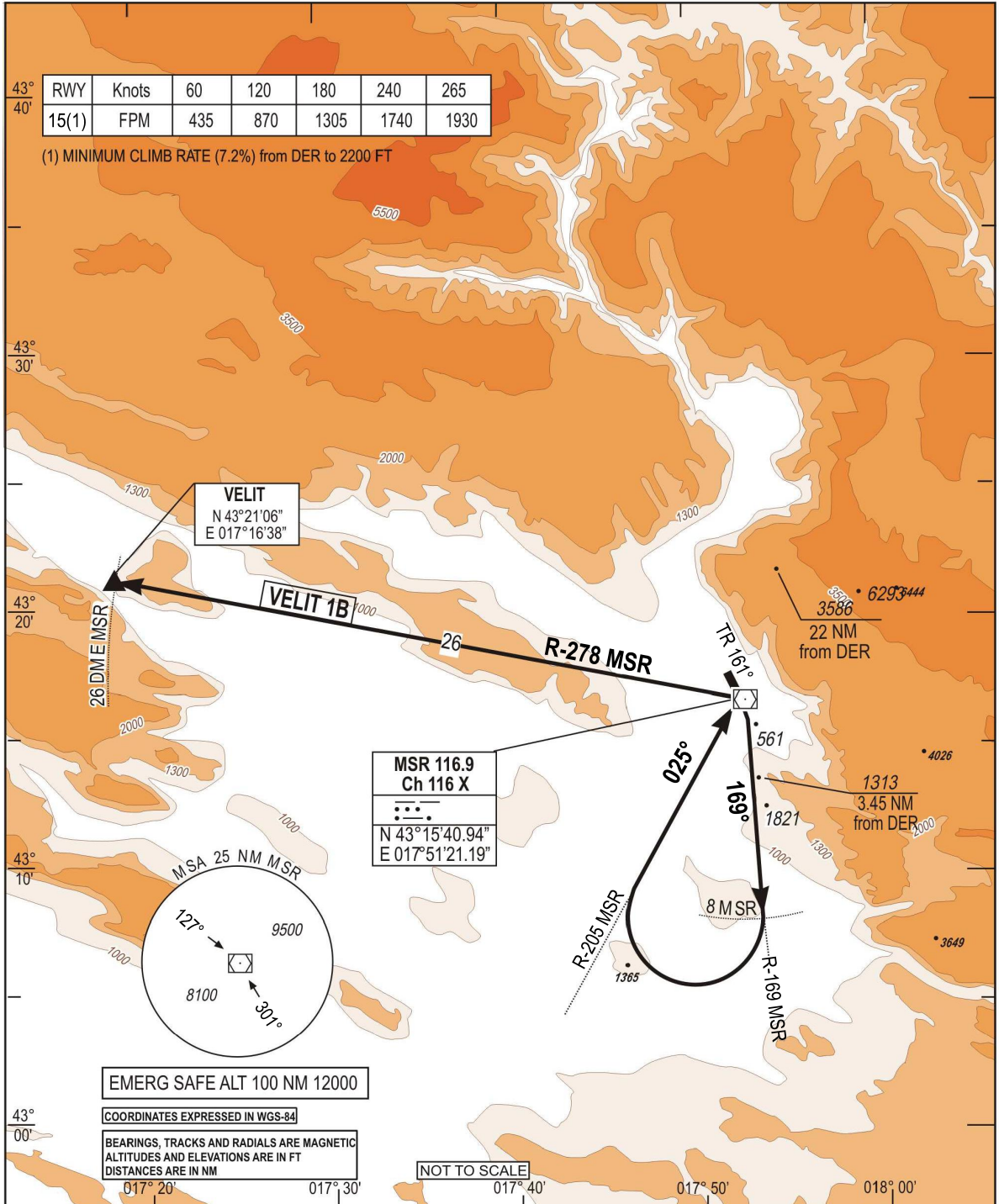


**STANDARD DEPARTURE CHART
INSTRUMENT (SID) - ICAO**

TRANSITION
ALTITUDE
10 000 FT
VAR 5°E (2020)

APP 120.225
129.875
TWR 125.550
ATIS 126.225

**MOSTAR (LQMO)
VELIT 1B RWY 15**



CHG: MAG VAR, MAG BEARINGS, EDITORIAL CHANGES;

SID	DEPARTURE ROUTE DESCRIPTION
<p>VELIT 1B (RWY 15)</p>	<ul style="list-style-type: none"> - After DER, climb(1)on TR 161° then R-169 MSR (1) Minimum climb rate : 7.2% from DER to 2200 FT - At 8.0 D MSR , turn right to intercept R-205 MSR inbound direct to MSR. - Over MSR, turn left to intercept R-278 MSR direct to VELIT - Then as directed by ATC.

THIS PAGE INTENTIONALLY LEFT BLANK